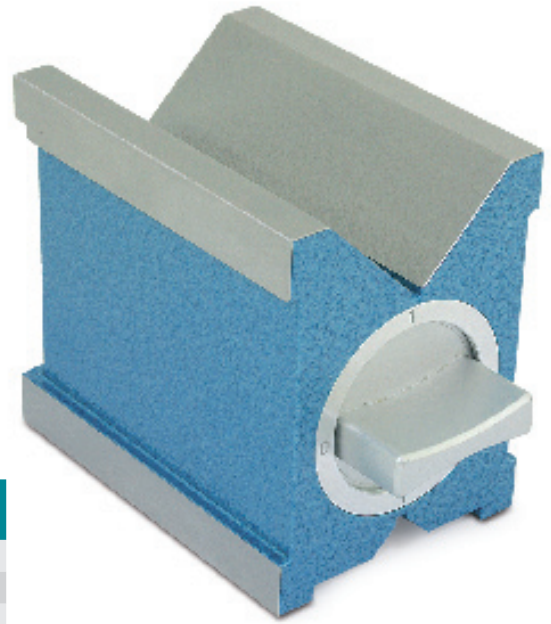


MP1 Magnetic Prism

The precision magnetic prism MP1 has 3 magnetic clamping surfaces (large prism, opposite small Prism and the end face), which are connected together. The system is completely sealed. Main areas of application can be found at the grinding, measuring, wire cutting or EDM. Angularity 0.004 mm, 0.004mm parallelism.



Standard Version

Model	Item-Nr.	Dimension (mm)			clampable Ø (mm)	Weight (kg)
		L	W	H		
MP1-80	2307 11	80	67	99	6-66	3
MP1-100	2307 12	100	70	99	6-70	3,8
pairs available						

Hardened Version

Model	Item-Nr.	Dimension (mm)			clampable Ø (mm)	Weight (kg)
		L	W	H		
MPH1-80	2307 13	80	67	99	6-66	3
MPH1-100	2307 14	100	70	99	6-70	3,8
pairs available						