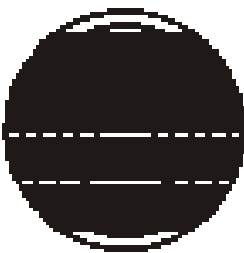
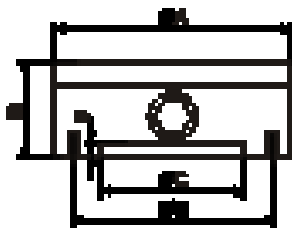
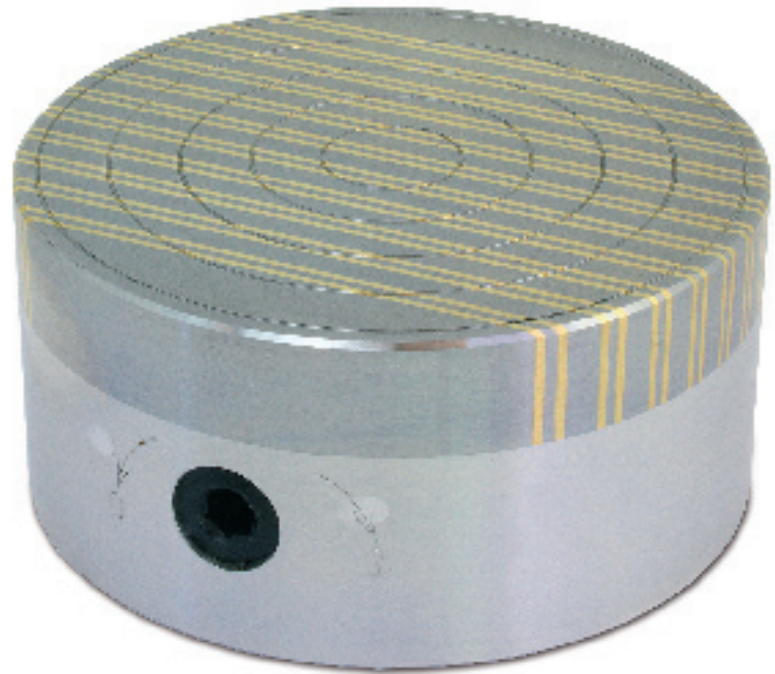


RF Permanent Magnetic circular Chuck

Use permanent magnet type rotary feed RF, with ceramic magnet system and fine pole for clamping of thin and small workpieces, in particular for grinding and turning of thin slices and rings. The magnetic force is infinitely variable, in the surface incorporated centering grooves facilitate alignment of the workpiece. In the rake face, a center hole can be introduced.



Structure:

Ceramic Magnet system, Aluminum body,
 Fine-pole pitch 4/6+2 mm
 Holding power ca. 80 N/cm²
 Magnetic field height ca. 4 mm
 Pole plate wearing limit 8 mm
 Switch travel MAG - ENT-MAG 500°

Recommendation:

Precise Fine-pole-plate for thin slices

Model	Item-Nr.	Dimension (mm)					Holes	Pole pitch	Weight (kg)	V-Max. (U/min.)
		A	B	C	D	E				
RF 10	2102 10	100	62	70	2.5	91	3 x M5	4+1.5+2+1.5	3	1500
RF 13	2102 13	130	62	90	2.5	120	4 x M6	4+1.5+2+1.5	5	1200
RF 16	2102 16	160	75	125	3	142	4 x M8	6+1.5+2+1.5	8	1000
RF 20	2102 20	200	80	150	4.5	182	4 x M8	6+1.5+2+1.5	13	800
RF 25	2102 25	250	80	200	4.5	232	4 x M8	6+1.5+2+1.5	20	700
RF 30	2102 30	300	85	250	4.5	285	4 x M8	6+1.5+2+1.5	27	700