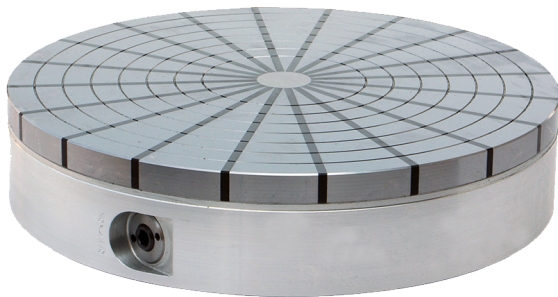


Overview

RSA 20

Permanent Magnetic Circular Chuck

Product number 2105 20



Description

RSA circular magnetic chucks with aluminum body and radial pole pitch impress with their lightweight design and maximum holding force. The double neodymium magnet system is adjusted via a self-locking spindle drive and can be perfectly regulated to the desired holding force. The RSA is a further development of our RS magnetic chuck, which has been very successful for many years; many empirical values from practical experience flowed into its development. Especially when machining rings, discs and sleeves, the uniform radial pole pitch offers significant advantages over magnetic chucks with parallel pole pitch. For the weight-critical dimensions D250-400mm, the weight has been reduced by 25% compared to the proven RS circular chuck. The sizes 500+600mm have been equipped with a reinforced pole plate and improved mechanics.

Structure

- Neodymium magnet system, aluminum base body
- Radial pole pitch
- Nominal holding force approx. 160 N/cm²
- Magnetic field height approx. 10mm
- Pole plate wear 7mm
- Switching path MAG - ENT-MAG 500°

Recommendation

Super strong round chuck especially for rings and for hard turning

Product information

Borehole:	M6
Dimension C (mm):	25
Dimension D (mm):	60
Dimension E (mm):	110
Dimension G (mm):	5
Dimension T (mm):	20
Dimension height (mm):	79
Dimension outer diameter (mm):	200
Nominal holding force (N / cm²):	140
Number of poles:	16
Weight (kg):	12
max. speed (RPM):	800
maximum through hole (mm):	25