

Overview

MBX 7 pair

magnetic clamping blocks

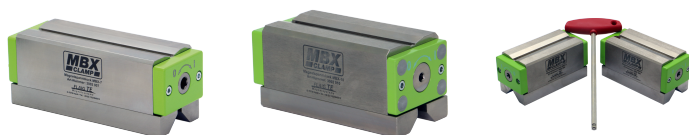
Product number 3002 007-1



Description

MBX magnetic clamping blocks have opposite clamping sides that are activated when actuated. They are designed to clamp workpieces on steel surfaces such as machine or assembly tables. Several MBX can also be connected together via the internal hexagon of the indexing shaft to clamp longer or larger workpieces. Activation is via the removable switching key with only 90° switching travel, the surfaces of the MBX are completely nickel-plated. With the two differently shaped clamping sides of the MBX, almost any workpiece geometry can be held, regardless of whether round material, sheet metal or profiles are to be clamped.

MBX are the optimal clamping device to clamp workpieces on welding or deburring tables for drilling, deburring, welding or thread cutting quickly, flexibly and without interfering contours.



Product information

Clamping surface (for flat and 90° profiles) (mm):	172 x 64
Clamping surface (for flat and round material) (mm):	156 x 57
Dimension height (mm):	71
Dimension length (mm):	178
Dimension width (mm):	64
System holding force (kN):	7
Weight (kg):	2x4,9