

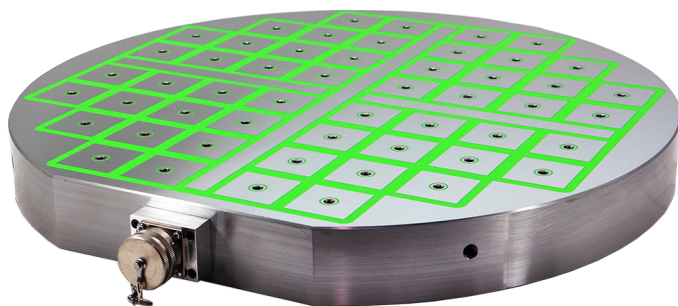
Overview

FXL-R 1250/70

Electro-Permanent Magnetic Chucks

Product number 2917 1250

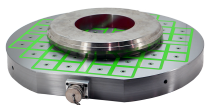
Description



FXL-R round magnetic chucks in square pole technology are especially suitable for use on the lathe and on rotary tables of machining centers. The frame construction of the FXL plate can be equipped with centering elements at the front on the clamping side as well as at the rear.

The connection to the FXL-C control unit can be made externally by plugging or also via a rear sliding contact with shaft feed-through.

The rear can be drilled 25mm deep at all points. Often FXL-R in customized design are exactly adapted to the machine rotary table and, if required, also equipped with zero point clamping systems.



Product information

Dimension diameter (mm):	1250
Dimension height (mm):	80
Number of poles:	120
Weight (kg):	550