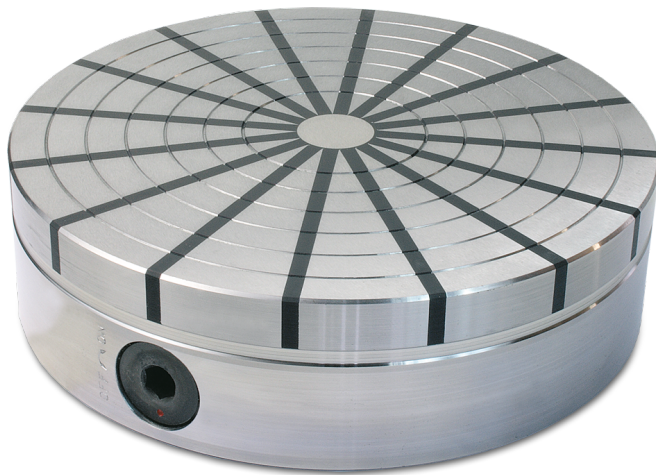


Overview

RS 25

Permanent Magnetic Circular Chuck

Product number 2103 25



Description

RS type permanent magnetic circular chucks with neodymium magnet system and radial pole pitch are used for clamping rings and discs that are difficult to hold. Especially for large diameter, radial or star pole pitch is characterized by higher rigidity and stability. RS circular chucks are specially designed for hard turning and can be operated at high speeds. The magnetic force is infinitely variable. Centering grooves facilitate alignment of the workpiece. A through hole with diameter C can be inserted in the center.

Design

- Neodymium magnet system, steel base body
 - Radial pole pitch
 - Nominal holding force approx. 160 N/cm²
 - Magnetic field height approx. 10mm
 - Wearability of pole plate RS 13 3mm, RS 15-80 7mm
- Switching path MAG - ENT-MAG 180°

Recommendation

Super strong round chuck especially for rings and for hard turning

Product information

| | |
|--|-----|
| Borehole: | M6 |
| Dimension C (mm): | 30 |
| Dimension D (mm): | 80 |
| Dimension E (mm): | 140 |
| Dimension G (mm): | 5 |
| Dimension height (mm): | 70 |
| Dimension outer diameter (mm): | 250 |
| Nominal holding force (N / cm²): | 140 |
| Number of poles: | 16 |
| Weight (kg): | 24 |
| max. speed (RPM): | 700 |
| maximum through hole (mm): | 30 |